



WHITewater
UNIFIED SCHOOL DISTRICT

WUSD Elementary Literacy

April 11, 2024

Last April we Presented to Our Board:

**Overidentified
Special Education**

20 %

significantly over the
national average

**District Reading
Proficiency**

26 %

Commitment to Excellence

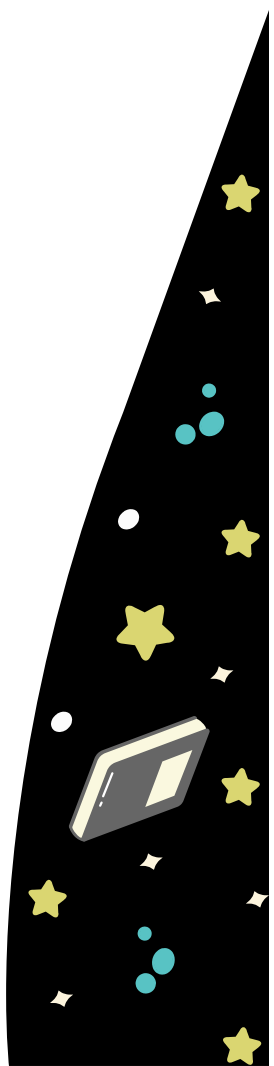
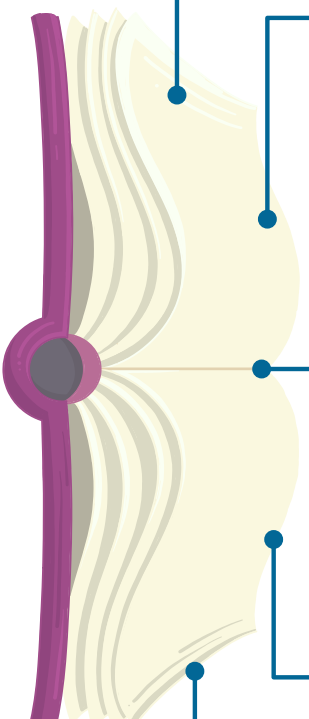
Reading materials
range in age from 5 to
over 15 years old,
research has changed.

PLC's

Our 3 elementary schools
are implementing different
reading curriculum at each
site.

Our Students

Our population and their
needs are changing, we
have to be responsive

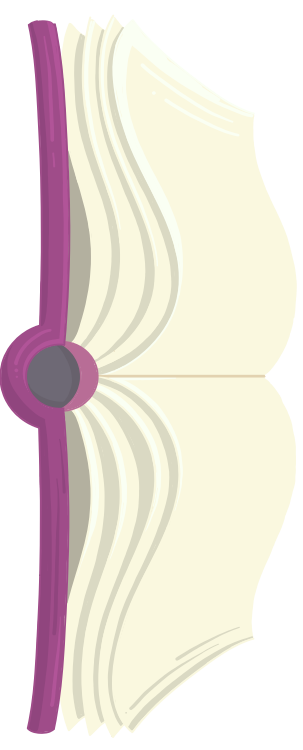


What is The Science Of Reading? (SOR)

“The body of work referred to as the “science of reading” is not an ideology, a philosophy, a political agenda, a one-size-fits-all approach, a program of instruction, nor a specific component of instruction. It is the emerging consensus from many related disciplines, based on literally thousands of studies, supported by hundreds of millions of research dollars, conducted across the world in many languages. These studies have revealed a great deal about how we learn to read, what goes wrong when students don’t learn, and what kind of instruction is most likely to work the best for the most students.”

– Dr. Louisa Moats

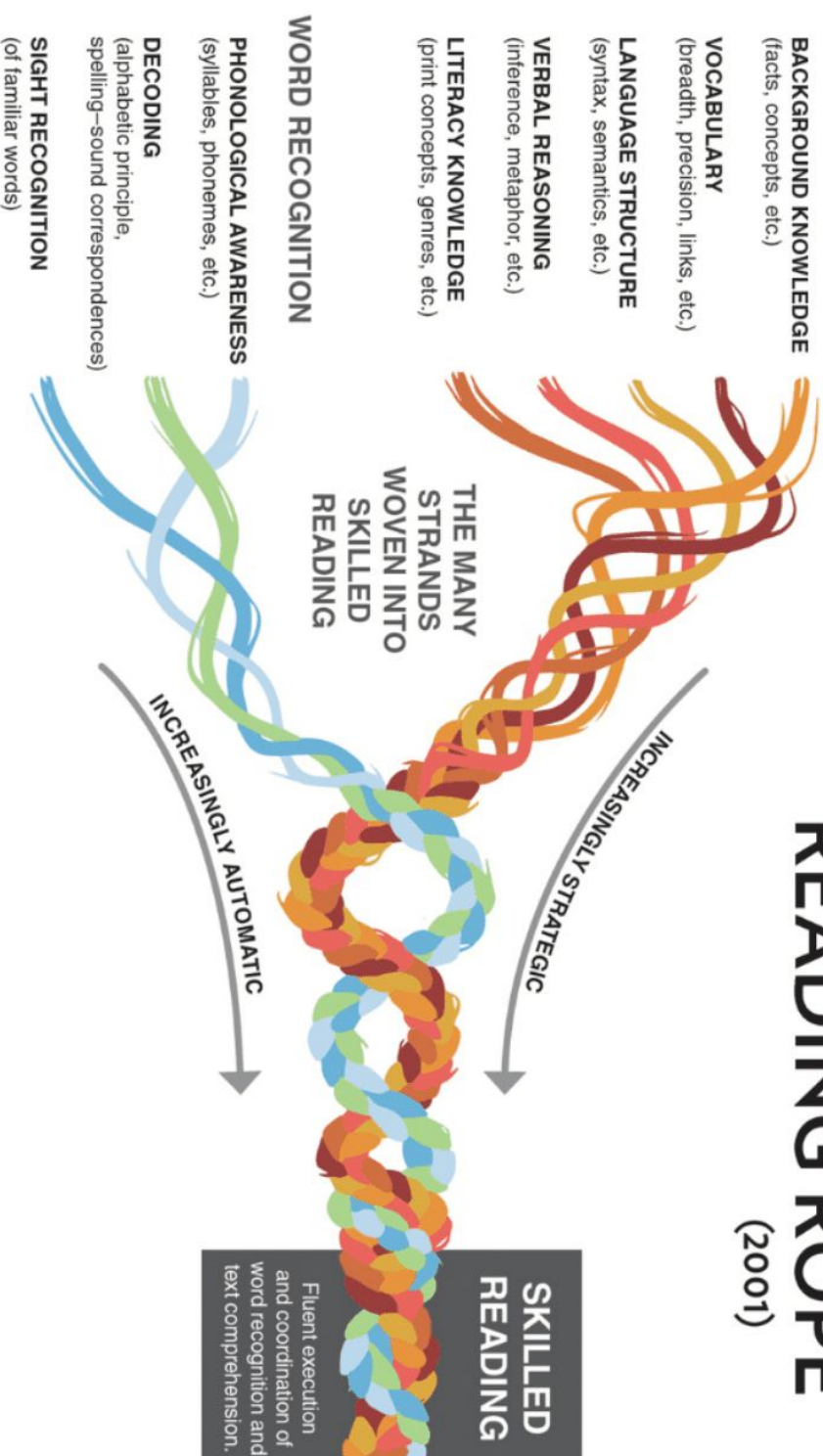
RC = D X LC

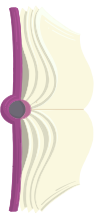


What is The Science Of Reading? (SOR)

LANGUAGE COMPREHENSION

SCARBOROUGH'S READING ROPE (2001)





WUSD Elementary SOR Timeline

Opening of 23-24

- Community Viewing of The Truth about Reading Documentary
- Staff PD on Science of Reading Framework & Instruction (ongoing)
- Consistent implementation of phonemic awareness materials
- SoR coaching- admin & teacher (ongoing)
- Parent Connection Nights at each school
- Collaborate with consultants/partners on curricular pilot for S2

Teacher Exploration

- Podcast
- Articles
- Site visit to Cudahy & debrief



Plan and Present to Board

- Plan PD with partners
- Literacy Discussions with Board
- Overview with Board on June 12
- June 26 Board Presentation: Years 1 & 2
- Leadership Literacy Training

Leadership Exploration

- Reviewed Reading Data
- Podcast
- Zoom with Mondovi Schools
- Site Visit to Cudahy

Initiation of Pilot- S2

- ONGOING:**
- Developing common understandings & practices in PLC
 - SoR coaching- admin & teacher
 - Common materials & training
 - Data collection and review

WUSD Literacy Successes

Whitewater is ahead of the curve

- Science of Reading professional development and curriculum alignment
- Meeting the requirements of WI Act 20

Policy Perspectives feature article



WHITEWATER'S HEAD START ON REVAMPING ELEMENTARY LITERACY AROUND THE "SCIENCE OF READING"

Long before the early literacy legislation that would become 2023 Wisconsin Act 20 was even introduced as a bill, the *Whitewater Unified School District* made a local decision to revamp its elementary reading curriculum and its related instructional practices to align with research-backed principles associated with the "science of reading." In doing so, Whitewater elected to move away from a "balanced literacy" model.

Now, following Act 20, many Wisconsin districts are starting down a similar path and preparing to implement curricular changes in early literacy beginning in the 2024-25 school year. The exact scope

1. How would the District describe the "before" approach to elementary literacy instruction (i.e., prior to 2023-24) that the District set out to change?

In the 2021-22 school year, we were engaged in an in-depth exploration of the development and use of professional learning communities (PLCs) among our District's educators. When our elementary teachers met to talk about curriculum as part of the PLC process, those conversations revealed that we were using very different resources with very different outcomes. A further review of our Math and Reading curricula during the 2021-22 school year similarly identified that our schools were not utilizing research-based curriculum in the same way at the same time. As one consequence, our systems of support were not always catching the needs of individual students as intended. We also concluded that we were over-identifying students within special education.

WUSD Literacy Successes

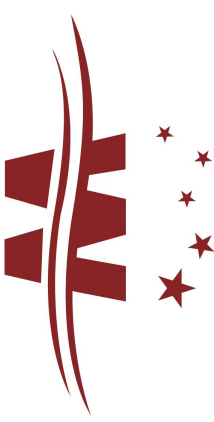
Whitewater is ahead of the curve

- Science of Reading professional development and curriculum alignment
- Meeting the requirements of WI Act 20

District data reflects the impacts of these implementations and alignment:

Beginning-of-Year to Mid-Year:

- 33% increase in K-5 students reading above grade level
- 17% decrease in K-5 students reading below grade level
- Growth observed among various disaggregated subgroups of students



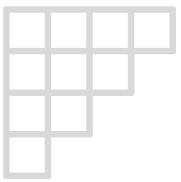
WHITTEWATER

UNIFIED SCHOOL DISTRICT

WUSD Literacy Growth K-5

40.9% proficient in 23-24 at

Mid-year

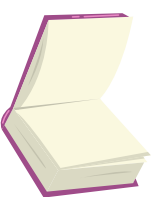




From Here Forward...

Goal: 52% in 24-25

Goal: 70% in 25-26



Literacy Focus Extends to WUSD Secondary Schools

2023-2024

- Implementation of language and vocabulary focused site-wide instructional strategies
- Academic support services available to all learners throughout the day with certified staff
- Implementation of research-based literacy interventions at Tier 2 and Tier 3
 - SIPPS: Systematic Instruction in Phoneme Awareness, Phonics, and Sight Words
 - The Third Quest: Reading Intervention
 - Language! Live: Literacy Intervention Program